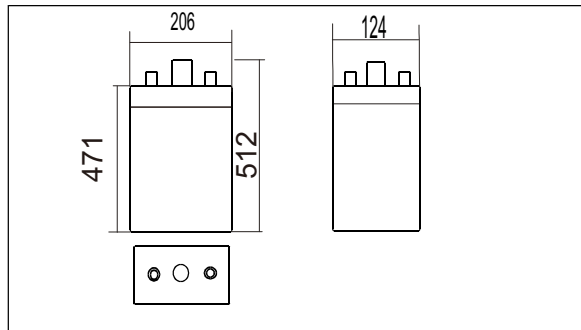




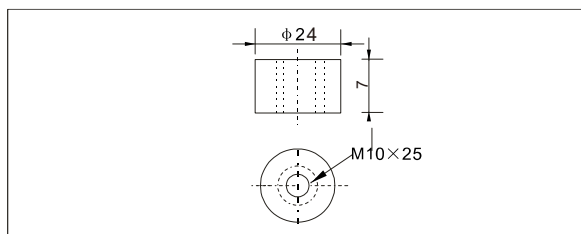
## 50PzV350(2V350AH)



### Outer dimensions (mm)



### Terminal Type (mm)



### Features

- Excellent high temperature performance;
- Excellent cycling performance;
- High strength ABS material;
- Patent: large capacity and thick plate structure design;
- Separator: glass fiber with high adsorption and high stability;

### Applications

- High temperature environment(35-70°C) ;
- Telecom&UPS;
- Solar and energy systems,

### International standards

- GB/T 22473 - 2008;
- JIS C8704-1 : 2006 ;
- IEC 60896-21/22 : 2004 ;
- Passed ISO9001、ISO14001、
- OHSAS18001、UL、CE、CGC.

### Specifications

Nominal Voltage	2V	
Rated capacity(10 hour rate)	350Ah	
Dimensions	Total Height	512mm( 20.2 inches)
	Height	471mm(18.5 inches)
	Length	124mm(4.9 inches)
	Width	206mm(8.11 inches)
Weight approx	29 kg (63.8 lbs)	

### Characteristics

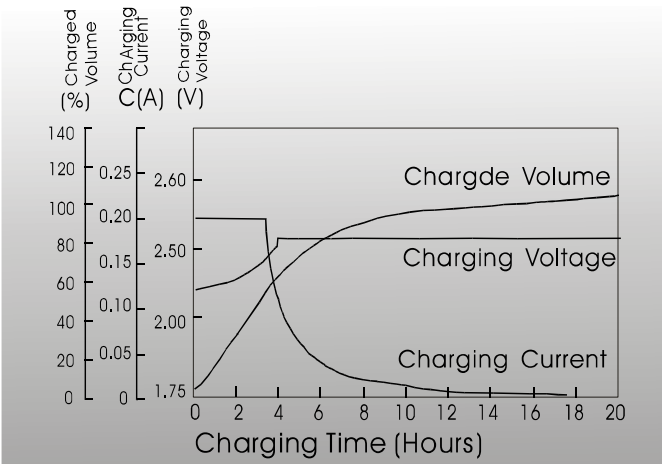
Capacity 25°C(77°F)	10 hour rate(35.0 A) 5 hour rate(63.6A) 1 hour rate(138.8A)	350AH 318AH 138.8AH
Internal Resistance	Full charged Battery at 25°C(77°F)	0.61 mΩ
Capacity affected by Temperature (10hour rate)	40°C(104°F) 25°C(77°F) 0°C(32°F) -15°C(5°F)	102% 100% 85% 65%
Self-Discharge at 25°C(77°F)	Capacity after 3 month storage Capacity after 6 month storage Capacity after 12 month storage	91% 82% 64%
Terminal quantity	2	
Charge (constant Voltage)	Initial Charging Current less than 87.5 A Voltage 2.25-2.40V	
Design Life	20 Year	

Constant Current(Amp) and Constant Power(Watt) Discharge Table at 25°C (72°F)

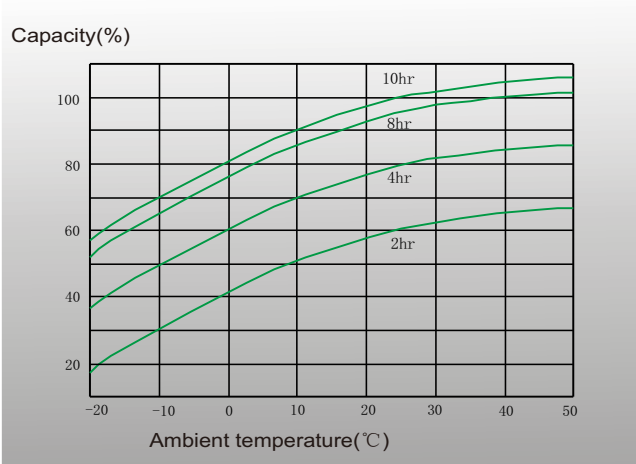
Time		30min	1hr	2hr	3hr	5hr	6hr	8hr	10hr	20hr	24hr	48hr	100hr
1.65V	A	304.5	201.3	131.8	103.3	71.2	57.6	46.7	40.8	21.1	17.4	9.3	4.6
	W	639	411	295	207	134	128	106	79	40	36	24	12
1.70V	A	295.8	192.5	124.3	97.4	67.1	54.4	44.7	38.5	20.6	17.4	9.3	4.6
	W	600	399	289	200	131	124	102	76	39	35	24	12
1.75V	A	280.0	183.8	117.3	92.8	63.6	51.7	42.8	36.8	20.0	17.3	9.2	4.6
	W	549	389	281	193	130	120	98	74	39	35	24	12
1.80V	A	269.5	175.0	110.8	87.5	59.5	49.4	41.2	35.0	18.9	17.3	9.1	4.5
	W	488	364	275	186	126	116	95	72	39	35	23	12
1.85V	A	253.8	166.3	105.6	82.3	57.2	47.1	38.9	33.1	17.9	16.5	9.0	4.5
	W	424	355	261	176	121	110	90	68	36	33	23	12



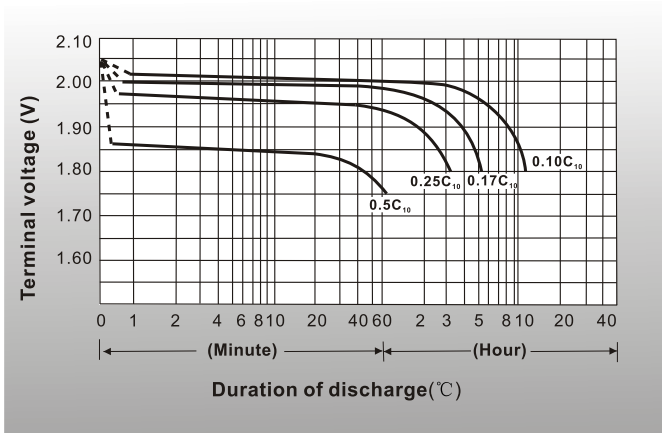
**● Charging characteristics(25°C)**



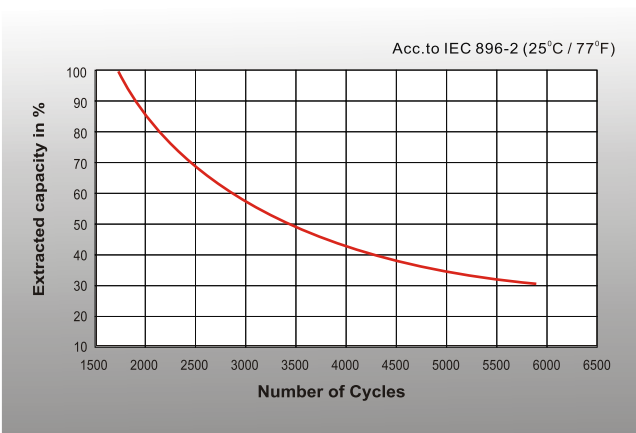
**● Curves of discharge capacity and ambient temperature**



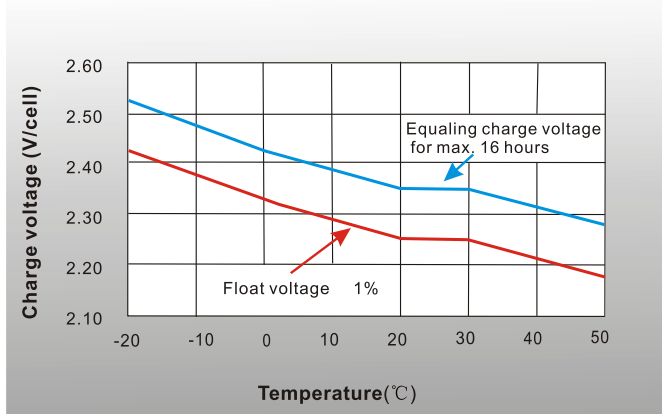
**● Discharge characteristics 77° F(25°C)**



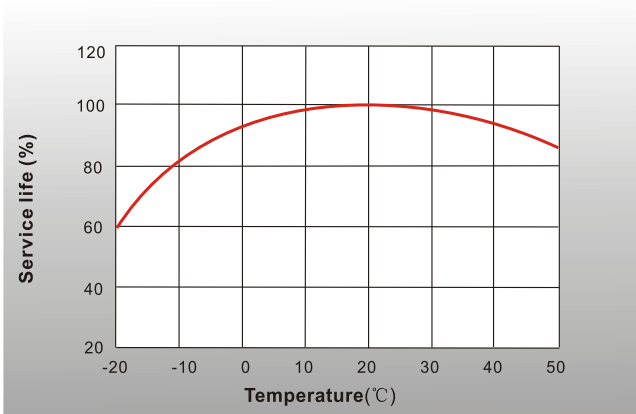
**● Cycle life in relation to depth of discharge**



**● Charge voltage vs Ambient temperature curve**



**● Service life vs Ambient temperature**



**Shenzhen Sunnyway Battery Tech.Co.,Ltd.**

Head Office: RM.A1302,NO.1 Building Tian'an Cyber Park, Longgang, Shenzhen, China  
 Production Base: Nanyi Road,Dongying Economic Development Zone, Shandong, China.  
 Tel:+86-755-84630145 Fax:+86-755-84630114  
 Email:jerry@sunnyway-battery.com

