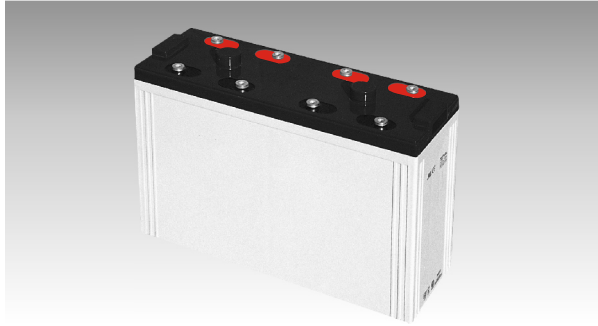
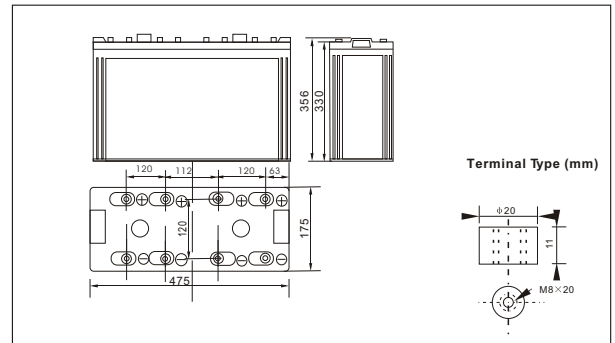




SWE210000(2V1000AH)



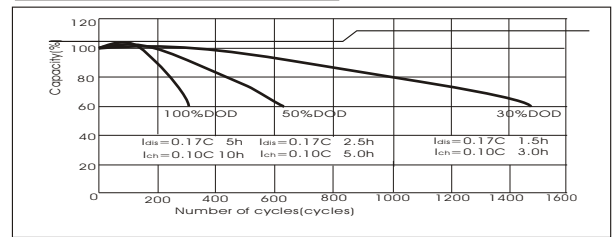
Outer dimensions (mm)



Specifications

Nominal Voltage		2 V
Rated capacity (10 hour rate)		1000 Ah
Dimensions	Total Height	356 mm (14.02 inches)
	Height	330 mm (12.99 inches)
	Length	475 mm (18.7 inches)
	Width	175 mm (6.89 inches)
Weight Approx		64 Kg (141.0lbs)

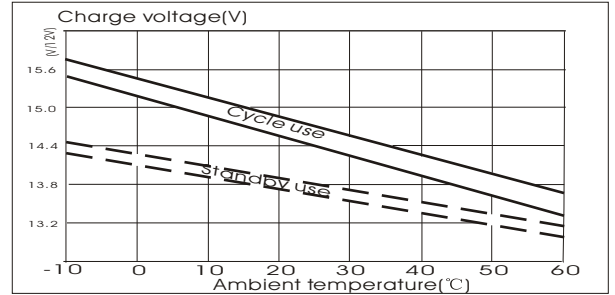
Curves of cycle life(25°C)



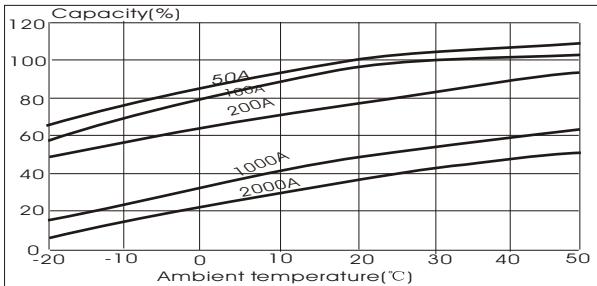
Characteristics

Capacity 25°C(77°F)	10 hour rate(100 A)	1000 AH
	5 hour rate(160A)	800 AH
1.5 hour discharge to 1.75 V		400 A
Internal Resistance	Full charged Battery at 25°C(77°F)	0.2 mΩ
Capacity affected by Temperature (10hour rate)	40°C(104°F)	102%
	25°C(77°F)	100%
	0°C(32°F)	85%
	-15°C(5°F)	65%
Self-Discharge at 25°C(77°F)	Capacity after 3 month storage	91%
	Capacity after 6 month storage	82%
	Capacity after 12 month storage	64%
Terminal		T20
Charge (constant Voltage)	Cycle	Initial Charging Current less than 400 A Voltage 2.35-2.40V
	Float	Voltage 2.25-2.30V

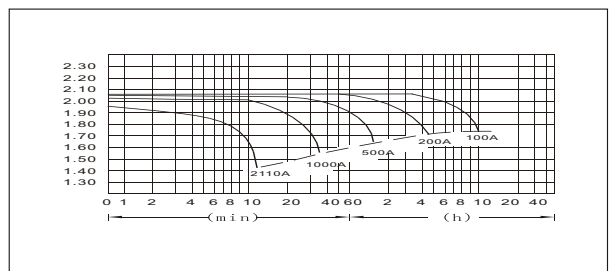
Curves of charge voltage and temperature



Curves of capacity and temperature



Discharge Curves 25°C(77°F)



Constant Current(Amp) and Constant Power(Watt) Discharge Table at 25°C(77°F)

Time		5min	10min	15min	30min	1h	2h	3h	4h	5h	8h	10h	20h
1.60V	A	3203	2110	1701	1140	600	350	257	200	165	117	105	56.7
	W	5509	3756	3040	2043	1080	641	477	375	313	223	202	109.9
1.70V	A	3102	1904	1602	1090	564	334	250	195	162	114	103	55.0
	W	5522	3543	2988	2039	1063	642	483	378	315	222	202	107.5
1.75V	A	3001	1703	1401	1020	546	326	244	192	160	113	101	55.0
	W	5462	3229	2665	1956	1054	630	474	374	313	221	199	108.4
1.80V	A	2892	1605	1302	940	528	318	238	189	156	110	100	54.0
	W	5408	3085	2500	1815	1024	621	468	372	307	217	198	107.2
1.85V	A	2795	1504	1202	840	510	310	230	184	152	107	95	51.0
	W	5283	2903	2332	1638	1000	611	455	365	302	214	191	103.0