



# SWE62000(6V200AH)



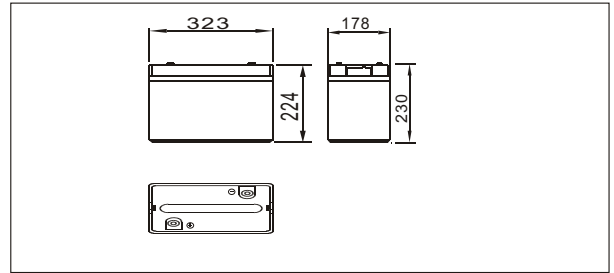
### Specifications

Nominal Voltage		6V
Rated capacity (10 hour rate)		200 Ah
Dimensions	Total Height	229 mm (9.02 inches)
	Height	224 mm (8.82 inches)
	Length	323 mm (12.72 inches)
	Width	178 mm (7.01 inches)
Weight Approx		28.5 Kg (62.8 lbs)

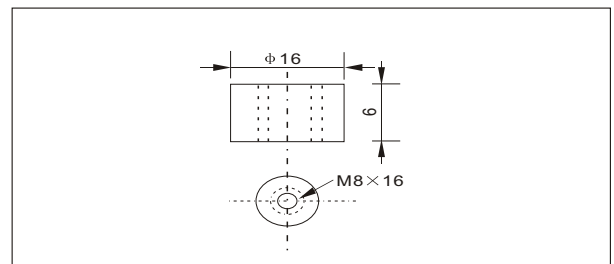
### Characteristics

Capacity 25°C(77°F)	10 hour rate(20A) 5 hour rate(32A) 1 hour rate(120A)	200 AH 160 AH 120 AH
Internal Resistance	Full charged Battery at 25°C(77°F)	Approx 1.5 mΩ
Capacity affected by Temperature (10hour rate)	40°C(104°F) 25°C(77°F) 0°C(32°F) -15°C(5°F)	102% 100% 85% 65%
Self-Discharge at 25°C(77°F)	Capacity after 3 month storage Capacity after 6 month storage Capacity after 12 month storage	91% 82% 64%
Terminal	T19	
Charge (constant Voltage)	Cycle	Initial Charging Current less than 80 A Voltage 7.05-7.20V
	Float	Voltage 6.75-6.90V

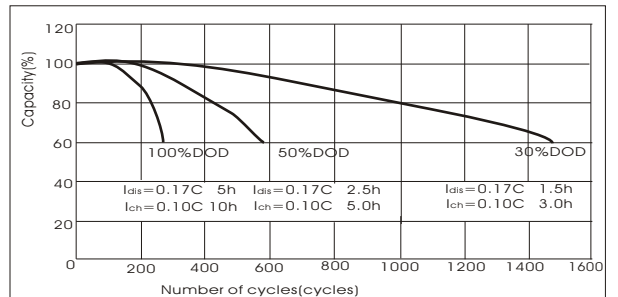
### Outer dimensions (mm)



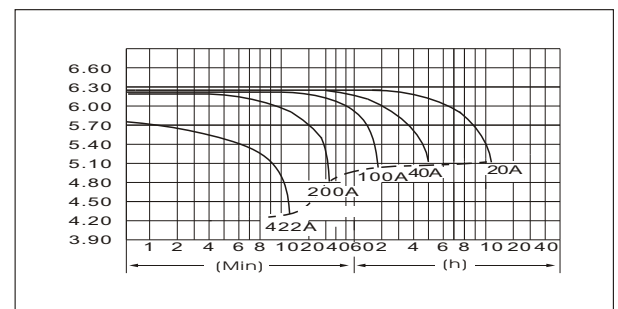
### Terminal Type (mm)



### Curves of cycle life(25°C)



### Discharge Curves 25°C(77°F)



### Constant Current(Amp) and Constant Power(Watt) Discharge Table at 25°C(77°F)

Time		5min	10min	15min	30min	1h	2h	3h	4h	5h	8h	10h	20h
4.80V	A	641	422	340	228	120	70	51	40	33	23	21	11
	W	6611	4507	3648	2451	1296	769	575	450	375	268	243	132
5.10V	A	620	381	320	218	113	67	50	39	32	23	21	11
	W	6626	4252	3585	2447	1276	765	573	449	374	267	242	129
5.25V	A	600	341	280	204	109	65	49	38	32	23	20	11
	W	6554	3875	3198	2348	1265	756	563	447	373	266	239	129
5.40V	A	578	321	260	188	106	64	48	38	31	22	20	11
	W	6490	3702	3000	2178	1229	745	561	446	369	261	238	129
5.55V	A	559	301	240	168	102	62	46	37	30	21	19	10
	W	6339	3483	2798	1966	1200	733	546	438	363	256	229	124